

# Springfield Fire Station No. 5

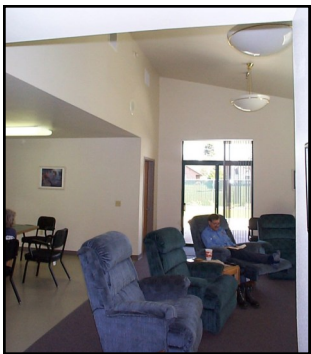
Springfield, Oregon



Exterior Elevation



Exterior Elevation



Day Room

Fire station #5 for the City of Springfield was the first station built in Springfield in nearly 20 years. The departments experience with architects had not been positive and they used a very tough selection process to select our firm out of nearly 25 proposals. This sub-station was critical to meet the growing needs of the City and our firm was selected for our interactive design process.

The station is a single level, 10,000 square foot facility housing fire personnel and 6 apparatus with 3 drive through double bays. All apparatus services are provided close to the apparatus for speed and efficiency. The station has private sleeping rooms with individual tap out system, physical training space, a generous kitchen and ample storage. The utility rooms has an oversized floor sink to allow personnel to clean up turn-outs prior to washing using warm water in a climate controlled environment. Acoustics was critical as well as climate control.

The building is comprised of a combination of CMU and wood framing on a concrete foundation. Exterior finishes are EFIS, and composition roofing. Interior finishes have long term maintenance in mind and ease of care and cleaning.

This facility was completed on time and nearly 20% under budget for \$1,000,000 and has been the showcase of the Department. Upon its completion and use, the Department hired our firm to provide a study of the other four stations for upgrades to make them similar to station #5.



Springfield Fire Station No. 5  
Paul L. Bentley Architect, AIA PC