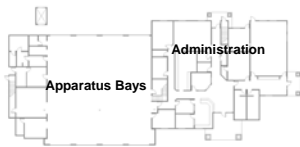
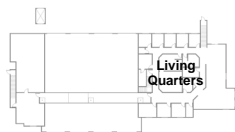


Winston-Dillard Fire Station

Winston, Oregon



First Floor Plan



Second Floor Plan



Conceptual Rendering of Main Entrance

The new main fire station for the Winston-Dillard Fire District is a two story, 16,000 square foot facility housing both personnel and district administrative services. The station accommodates 8 apparatus with 4 drive through double bays and provides a suspended catwalk with 3 poles for quick and easy deployment of fire personnel. All apparatus services are provided on the ground floor along with a training room/community conference room which can be opened to the public without opening the station. Administrative functions include the typical functions as well as a Community Command Center for use by all major jurisdictions during a major disaster or crisis. The firefighters are housed on the second floor with private sleeping rooms, library/study, physical training space, and typical “house” functions. Acoustics, climate control, separation from administrative/business functions have all been nicely articulated for the comfort of the station personnel.

The building is comprised of a combination of CMU and wood framing on a concrete foundation. Exterior finishes are beveled composition wood siding with a brick wainscoting and asphalt composition roofing. Interior finishes have long term maintenance in mind and ease of care and cleaning.

This facility was completed on time and on budget. Documents for a medical office complex on the same property are currently under way for a combined budget of \$3,200,000.



Conceptual Rendering

Winston-Dillard Fire Station
Paul L. Bentley Architect, AIA PC

Winston-Dillard Fire Station

Winston, Oregon



Turn-out Storage



Reception Work Area



Training Room



Quarters Kitchen

The new main fire station for the Winston-Dillard Fire District contains a state of the art training room, which is also rented out to the community. Plenty of work and storage space was included as well as appropriate turn-out storage located close to the pole #3. A kitchen that provides 3 refrigerators, 3 pantries, and 2 dishwashers to accommodate three shifts is critical for meal preparation and good living conditions.



Picture of Main Entrance

The front elevation and main entry comprise one of Winston's nicest developments and has tremendously improved Main Street.



Front of Apparatus Bays

Winston-Dillard Fire Station
Paul L. Bentley Architect, AIA PC

Winston-Dillard Fire Station

Winston, Oregon



Apparatus Bays



EMT Supply Storage



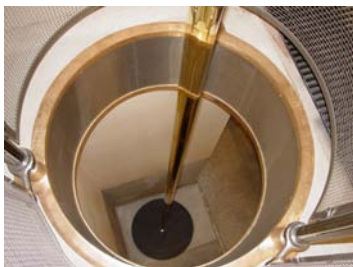
Apparatus Floor



Apparatus Bays

The new main fire station for the Winston-Dillard Fire District has a very large apparatus floor to accommodate eight various apparatus. A bridge walk was developed to allow fire fighters quick access to the various apparatus, via 3 fire poles. Acoustical ceilings, drainage, utilities, etc were all planned out to enable fire fighters to work efficiently and comfortably.

Storage is always an issue, and therefore large amounts of a variety of storage spaces were planned, including one large room for EMT storage, located close to the ambulance bay.



Picture of Pole #1



View from Bridge



Looking across Bridge over Apparatus Bays

Winston-Dillard Fire Station
Paul L. Bentley Architect, AIA PC